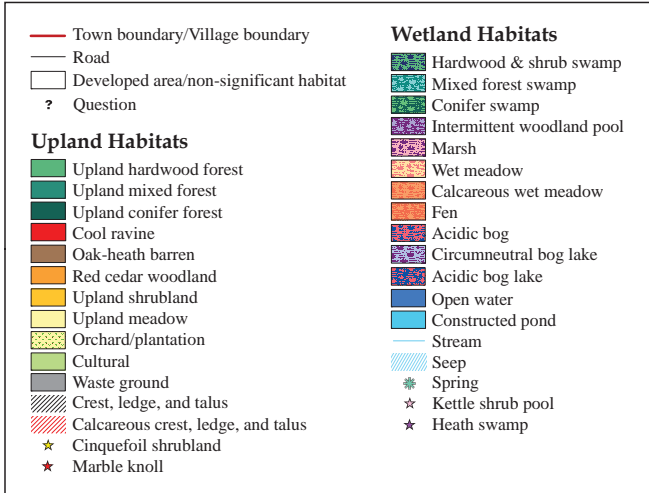


# SIGNIFICANT HABITATS IN THE TOWN OF NORTH EAST, NEW YORK

(For greater detail see sheets 1-3)



Habitats were identified through map analysis and aerial photograph interpretation, and as many locations as practicable were field-verified. Mapping and field work were done primarily by Claudia Knab-Vispo and Kristen Bell. Color infrared photographs in the USGS NAPP series, taken in spring 1994 (scale 1:40,000), were used for stereoscopic photo-interpretation. Habitats were digitized onscreen over infrared orthophoto images taken in spring 2004, obtained from the New York State GIS Clearinghouse. The report prepared in conjunction with these maps (Knab-Vispo et al. 2008) explains the habitat identification and mapping methods, describes the ecological significance of each habitat type, and offers conservation and management recommendations.

Road locations and names were obtained from the New York State GIS Clearinghouse website, and modified by us where necessary.

Some habitat types can only be identified in the field. Question marks on the map indicate some unchecked areas where such habitats may occur.

The map was created using ArcView 9 GIS software on a Dell INSPIRON 1150 computer, and printed on a Hewlett Packard DesignJet 800PS plotter.

Funds for this project were provided to Hudsonia Ltd. by the Dyson Foundation and the Millbrook Tribute Garden (through the Dutchess Land Conservancy).

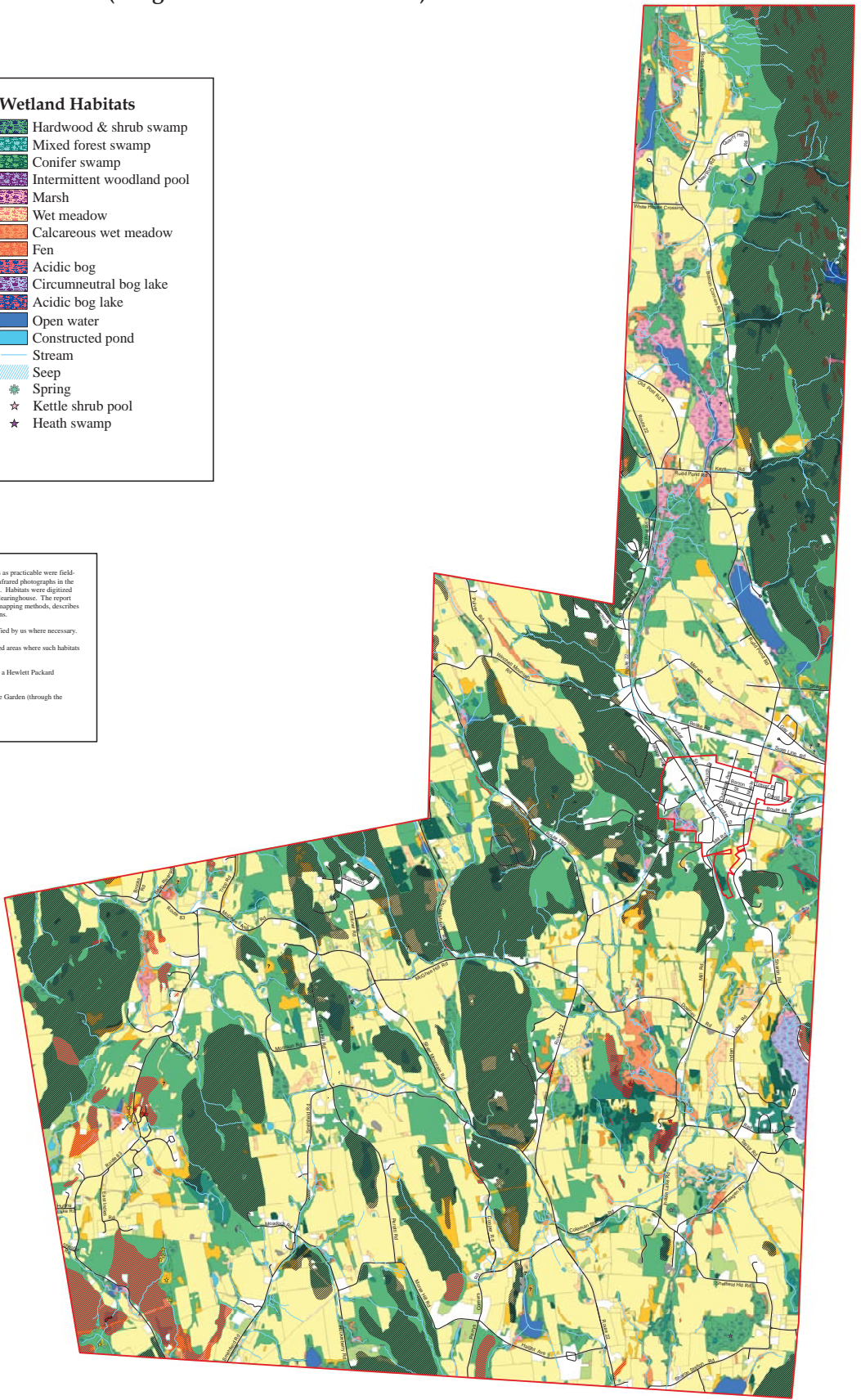
For more information contact Kristen Bell or Gretchen Stevens, Hudsonia Ltd., 845-758-0600.



SCALE 1:19,000

**An important caution:**

This map is suitable for general land-use planning, but is not suitable for detailed planning and site design, or for jurisdictional determinations (e.g., for wetlands). Boundaries of wetlands and other habitats depicted here are only approximate.



Hudsonia Ltd.  
 P.O. Box 5000  
 Annandale, NY 12504  
 www.hudsonia.org