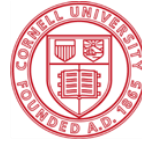


Community Profile: Agriculture and Farms - 2020

North East, New York



Cornell University
Cooperative Extension
Dutchess County

Dutchess County Agriculture

Dutchess County agriculture comprises over 170,000 of the county's 512,000 total acres (30%). Our farms produce a total of \$44.8 million in goods and are a large part of the county's \$438 million. Agriculture is one of the county's largest industries; its diversity and impact on the local economy is substantial.



Pleasant View Farm. Photo credit Sean Carroll

Agriculture in North East

The Town of North East adopted its Master Plan in 1994 and is currently developing a revised plan. The 1994 plan encouraged agricultural uses and called for protection of agricultural land, encouraged cluster development in agricultural areas and recommended that density bonuses be provided when soils of statewide importance are dedicated as preserved open space. Farmland within the town has been zoned for low density residential development. The recommended lot size is five acres per 1 dwelling unit. Minimum lot size for cluster developments is between 10,000 and 20,000 square feet.

Prior to 2008, a decrease of more than 13% in the Town's Agricultural District acreage was a reflection of impacts on the local dairy industry rather than a dramatic increase in population. As of 2016, however, North East saw a 3% increase in its total Agricultural District acreage (from 2008 numbers).

The pending purchase of development rights for the 256.5-acre Pleasant View Farm in North East and Pine Plains will help to stabilize a key component of the dairy industry that does remain in this region. The Town has committed local funding to contribute to the County's match for a grant from the New York State Department of Agriculture and Markets.

In association with the Dutchess Land Conservancy, the Town of North East developed an agricultural protection plan based on a detailed study of soils, water resources, topography, and existing development patterns.

The Town has convened a committee charged with the task of setting priorities and implementing the plan's recommendations. The Dutchess Land Conservancy also created a farm development plan for a farm located on Route 22, providing the landowner with a series of development scenarios ranging from full build-out to a minimal number of estate lots.

A Closer Look

Communities in Dutchess County contain a diverse range of farm enterprises, from dairy, livestock and field crops to horses, orchards, and vineyards. Many of the farms produce a variety of goods as well. For example, some dairy farms also produce hay or grains. However, if the majority of the farm's income is generated from dairy, dairy is considered the enterprise. Farm enterprise types were developed from documentation provided by the New York State Department of Agriculture and Markets; they were then aggregated into larger categories for simplification.

Table 1. Farms and Acreage in North East

Number of Farm Parcels	371
Average Size of Ag Parcel	53 acres
Land in Farms	19,521 acres
Total Land in North East	27,929 acres
Percentage of Town in Farms	70%

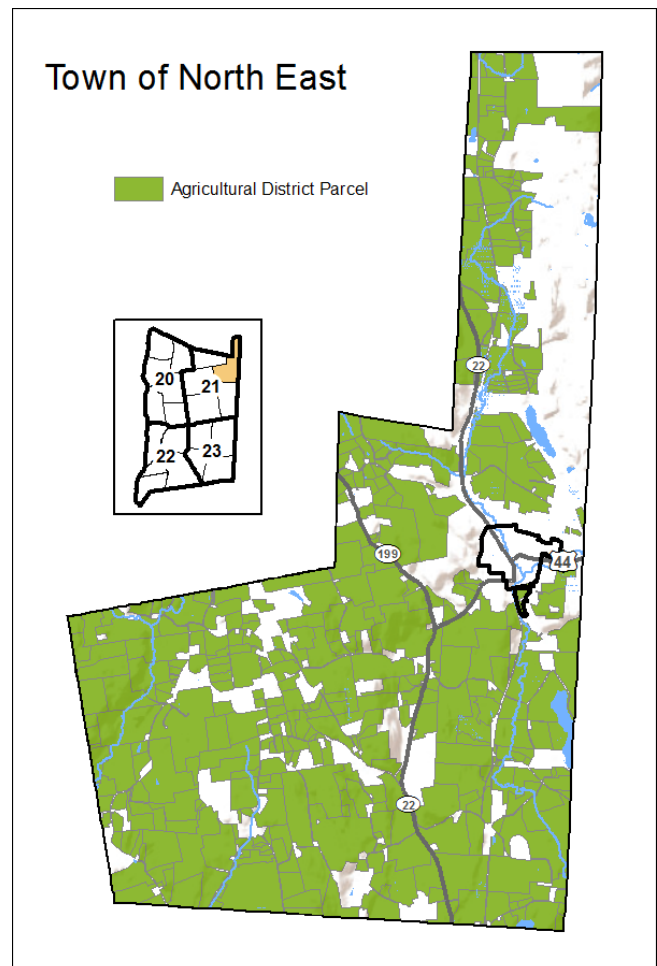


Figure 1. Map of Town of North East in Agricultural District 21

It is important first to note that this data is based on farm *parcel* data collected, and therefore does not necessarily reflect the number of actual farms. For example, one farm could have one *or* several parcels.

Figure 2 illustrates the relative acreage distribution of farm enterprises in the town of North East. The largest segment (by acreage) is *Production Agriculture*, with farm operations on 10,821 acres of property. *Beef and Livestock* is another particularly large agricultural segment in North East, comprising 2,398 acres.

Most farms in Dutchess County are small farms, grossing less than \$10,000 in annual sales. These farms also typically make fewer capital investments. The town of North East is not an exception. There are far more farms with annual capital investment in the 'Below \$10,000' category than there are in other 5 categories combined (see Figure 3).

In terms of the economic benefits for Dutchess County and the region as a whole, small farms generate significant dollars that are then spent on investments (equipment, vet fees, etc.) that fuel the local economy. Larger farm operations, although fewer in number, generate higher gross sales and capital investment. A significant number of North East's farm parcels (49) had capital investments between \$10,000 and \$100,000, while 51 invested \$100,000 or more (Figure 3). These figures are important to consider when looking at the impact of agriculture in the county, as a large portion of these capital investments go back into the local economy.

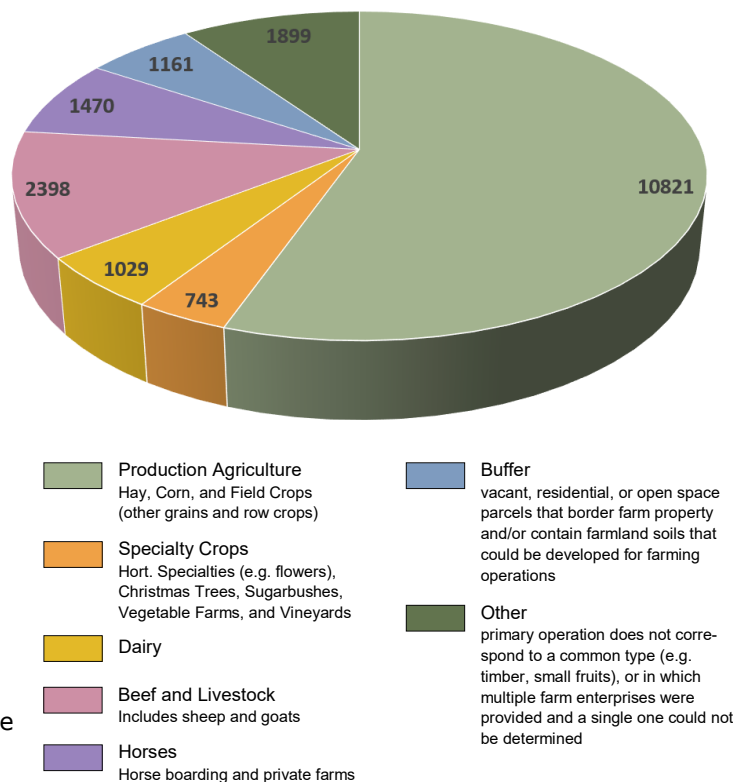


Figure 2. Acreage Distribution by Enterprise Category

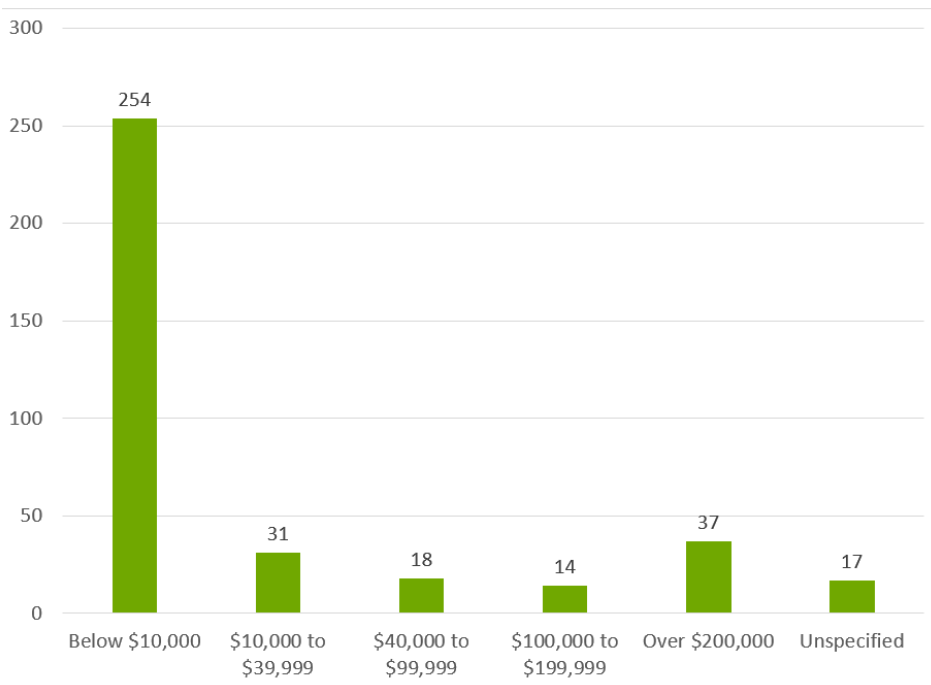


Figure 3. Number of Farm Parcels by reported Capital Investment



McEnroe Farm. Photo credit: Sean Carroll

Sources:

Agricultural District Recertification Process 2015 for 2016 Recertification. Cornell Cooperative Extension Dutchess County. April 2016. Updated 2020

Census and Demographics. Dutchess County Department of Planning and Development. Retrieved from <http://co.dutchess.ny.us/countygov/departments/planning/plcensus.htm>, June 2015.

CCEDC provides equal program and employment opportunities. The programs provided by this agency are partially funded by monies received from the County of Dutchess.